



Varbola kergiiklustee valgustus

Luminaire list

Φ_{total} 10996 lm	P_{total} 80.0 W	Luminous efficacy 137.5 lm/W
-----------------------------------	------------------------------	---------------------------------

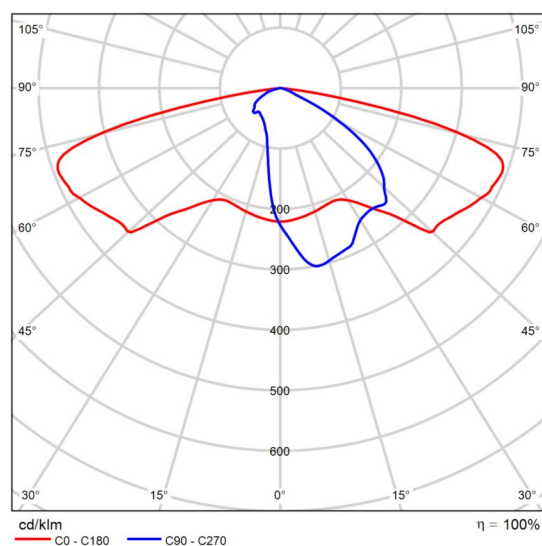
pcs.	Manufacturer	Article No.	Article name	P	Φ	Luminous efficacy
4	Vizulo	60009536 20 MRSE 020 730 L22 AA008	Mini Martin 20 W 8 LED	20.0 W	2749 lm	137.4 lm/W

Product data sheet

Vizulo - Mini Martin 20 W 8 LED



Article No.	6000953620 MRSE 020 730 L22 AA008
P	20.0 W
Φ_{Lamp}	2749 lm
$\Phi_{\text{Luminaire}}$	2749 lm
η	100.00 %
Luminous efficacy	137.4 lm/W
CCT	3000 K
CRI	70

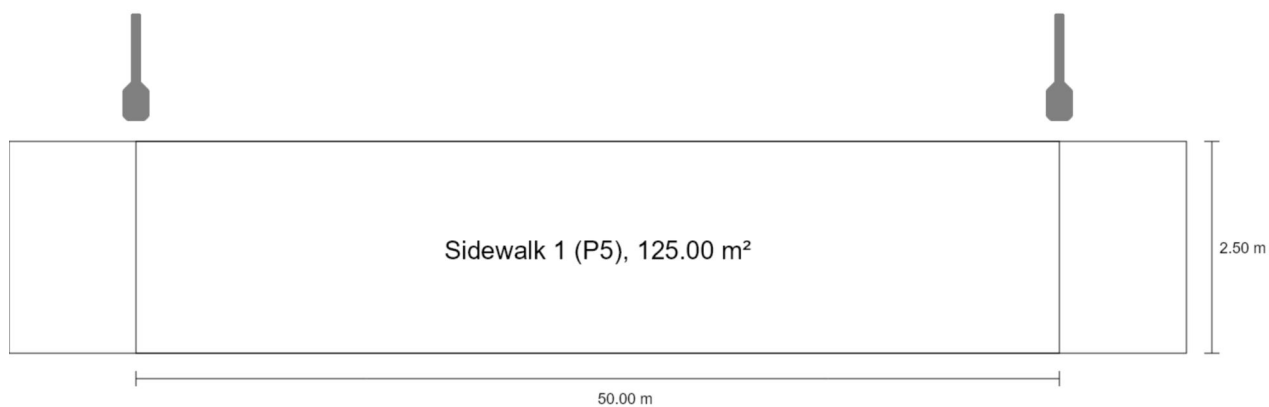


Polar LDC

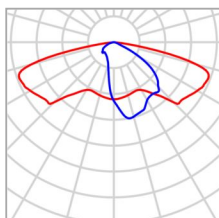


Description

Summary (according to EN 13201:2015)



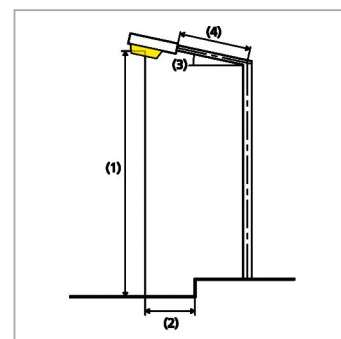
Summary (according to EN 13201:2015)



Manufacturer	Vizulo	P	20.0 W
Article No.	6000953620 MRSE 020 730 L22 AA008	Φ_{Lamp}	2749 lm
Article name	Mini Martin 20 W 8 LED	$\Phi_{\text{Luminaire}}$	2749 lm
Fitting	1x 8 LED MOD AA	η	100.00 %

Mini Martin 20 W 8 LED (single side top)

Pole distance	50.000 m
(1) Light spot height	8.000 m
(2) Light point overhang	-0.500 m
(3) Boom inclination	0.0°
(4) Boom length	1.000 m
Annual operating hours	4000 h: 100.0 %, 20.0 W
Wattage / route	400.0 W/km
ULR / ULOR	0.00 / 0.00
Max. luminous intensities Any direction forming the specified angle from the downward vertical, with the luminaire installed for use.	$\geq 70^\circ$: 593 cd/klm $\geq 80^\circ$: 227 cd/klm $\geq 90^\circ$: 0.00 cd/klm
Luminous intensity class The luminous intensity values in [cd/klm] for calculation of the luminous intensity class refer to the luminaire luminous flux according to EN 13201:2015.	–
Glare index class	D.6
MF	0.80



Summary (according to EN 13201:2015)

Results for valuation fields

A maintenance factor of 0.80 was used for calculating for the installation.

	Symbol	Calculated	Target	Check
Sidewalk 1 (P5)	E_{av}	3.75 lx	[3.00 - 4.50] lx	✓
	E_{min}	0.81 lx	≥ 0.60 lx	✓

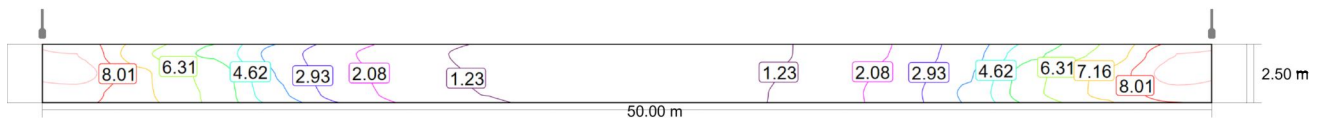
Results for energy efficiency indicators

	Symbol	Calculated	Energy Consumption
Street 1	D_p	0.043 W/lx*m ²	–
Mini Martin 20 W 8 LED (single side top)	D_e	0.6 kWh/m ² yr	80.0 kWh/yr

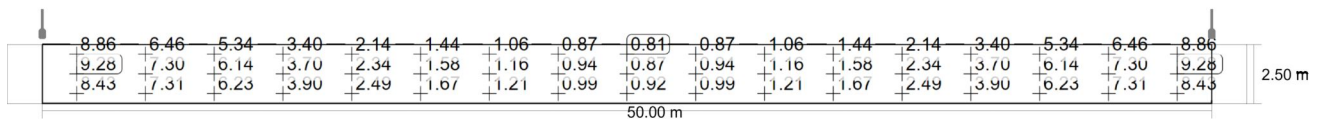
Sidewalk 1 (P5)

Results for valuation field

	Symbol	Calculated	Target	Check
Sidewalk 1 (P5)	E_{av}	3.75 lx	[3.00 - 4.50] lx	✓
	E_{min}	0.81 lx	≥ 0.60 lx	✓



Maintenance value, horizontal illuminance [lx] (Iso-illuminance curves)



Maintenance value, horizontal illuminance [lx] (Value grid)

m	1.471	4.412	7.353	10.294	13.235	16.176	19.118	22.059	25.000	27.941	30.882	33.824	36.765	39.706	42.647	45.588	48.529
2.083	8.86	6.46	5.34	3.40	2.14	1.44	1.06	0.87	0.81	0.87	1.06	1.44	2.14	3.40	5.34	6.46	8.86
1.250	9.28	7.30	6.14	3.70	2.34	1.58	1.16	0.94	0.87	0.94	1.16	1.58	2.34	3.70	6.14	7.30	9.28
0.417	8.43	7.31	6.23	3.90	2.49	1.67	1.21	0.99	0.92	0.99	1.21	1.67	2.49	3.90	6.23	7.31	8.43

Maintenance value, horizontal illuminance [lx] (Value chart)

	E_{av}	E_{min}	E_{max}	$U_o (g_1)$	g_2
Maintenance value, horizontal illuminance	3.75 lx	0.81 lx	9.28 lx	0.22	0.09